



Happy New Year!

We hope you all had a lovely Christmas and New Year holiday, it seems so long ago now! We had a slightly wet start to the year with a flood in the canteen (more details below) but are slowly getting back into the swing of things, ready for the next school holidays. We apologise for this month's late newsletter but hopefully (if we can avoid any other major disasters!) the next newsletter will be sent 4 weeks before the holidays.

We look forward to seeing you all soon.

The Thomley team



### Canteen catastrophe!

Due to a recent flood (we know how to start a New Year at Thomley!) the canteen and kitchen have been temporarily relocated to 2 other rooms. The smaller space available may affect eating times, so please call the office if you have any concerns. During busy times we may use the art room between 12pm-1pm for a larger eating area. We will keep you updated with any developments and apologise for any disruption to our normal service.



Please remember to call or email.....

A minimum of 25 children missed out on the opportunity to visit Thomley over the Christmas holidays due to places which had been pre booked but were not used.

We appreciate that it can often be difficult to remember to call during busy holiday times, especially if related to family sickness or emergencies. However your space may give another family the opportunity to visit instead. So please remember to cancel your place by contacting us on 01844 338380 or milly@thomleyhall.org

### Staff vacancies at Thomley - Casual Holiday Playworker

£6 per hour

We are continuing to build a bank of playwork staff who we can call upon for school holidays and busy times. Key elements of this role are to:

- Support all visitors and day to day running of the centre
- Prepare and supervise play activities
- Help maintain health and safety standards



Thomley is currently under-represented by male playwork staff, and we therefore welcome male applicants.

If you are interested in applying or would like more information, please contact Claire or Milly on 01844 338380. Alternatively you can look on our website (in the 'About Us' - 'Staff Vacancies' section)

### Parent /Carer Information—EDCM Update

£3,300 funding has now been secured for the first quarter of 2009 for an Oxfordshire parent/carer forum. Further funding of £10,000 will be available for 2009/2010. **Contact a Family are going to host several events during February 2009** around the county to inform parent/carers who wish to be involved. These will identify parents who would want to move this process forward either by joining the forum and/or becoming a member of the steering group. **If you would like more information please contact Valerie Reed of Contact a Family on (01582) 600388 or at [valerie.reed@cafamily.org.uk](mailto:valerie.reed@cafamily.org.uk)**

### Upcoming dates

Open 10am-3.30pm

### Feb School Holidays

17th—21st February

### Easter School Holidays

7th—9th April

Closed 10th & 11th April

14th—18th April

### Pre-School Days

10th February

10th March

### Adult Days

3rd February

3rd March

31st March

### Quiet Day

31st January

28th February

28th March

### Teenage Day

17th February

(younger siblings welcome)

### Dads Day

7th March

(open to all children)

If you are coming with fewer than originally booked, please let us know so we can offer places to others.

## Holiday Update—Christmas and New Year Activities

Thomley kept up its Christmas traditions in 2008 with a visit from our beloved Santa, whilst listening to the soothing tones of the Thame Festival Choir. We then snuggled down for our Christmas PJ party with hot chocolate and marshmallows galore! We celebrated the start of 2009 as only you can...with a disco and snow machine!!! With the conga line led by the Thomley staff, we danced our way into the New Year.



Our conga line in full flow!

If you would like to collect your photos with Santa, they will be on display over the February half term.

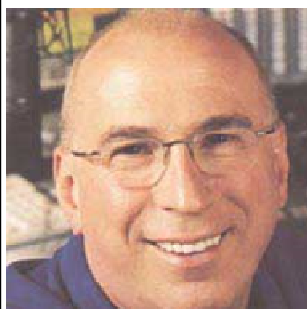
### Teenage days explained...

Although we will be working on our long term provision for teenagers over the next few years, we are hoping to continue our 'Teenage Days' throughout 2009. These days are intended for 10-19 year olds, plus their siblings. They are designed to enable families to relax knowing that there will not be lots of younger children around.

If you feel that our teenage days would be more appropriate for your family but your child/ren are not within the specified age range, please speak to the Milly on 01844 338380 or email milly@thomleyhall.org



### Ken Bruce – A second patron for Thomley



We are delighted to introduce you to Ken Bruce who, in December 2008, agreed to become a new Patron of Thomley, alongside Jeremy Irons.

Ken's patronage to Thomley is particularly pertinent in that he and his family have been regular visitors to the centre, together with their son Murray who has autism. As Patron, we hope that Ken will lend his voice to Thomley, to tell other people about the joy and freedom that Thomley brings to disabled children and their families.

Ken Bruce, born a Glaswegian, has been working for Radio 2 since the early 1980s. He is best known as presenter of his own mid-morning show on Radio 2, which can be heard between 9.30am and midday, Monday to Friday. Ken has also presented Pick of the Week and Breakaway on Radio 4 and hosted his own weekly music programme on the BBC World Service.

#### Wish list...

- Metal detector to find things in the ball pool
- Hairy Maclary Books
- Folding wheelchair
- Plain white / cream fabric (e.g. bed sheets)
- Hand mixer
- Display boards
- Midi CD systems
- Tea spoons
- Double knitting wool
- Microphone and mini PA system

#### Volunteering Opportunities...

We are on the hunt again to recruit more volunteers for various jobs around the site. These include;

- Male Volunteers
- Keen gardeners
- Maintenance (indoors and outside)
- Admin (must have competent computer skills)
- Playwork (weekdays during school holidays)

We offer a thorough induction so that volunteers have all the skills they need. This includes health and safety training and shadowing of staff. Please be aware that there are quite a few time consuming induction procedures you will need to undertake before commencing your volunteering role.

Please contact Milly for further information.

#### HOW TO CONTACT US



[www.thomleyhall.org](http://www.thomleyhall.org)

THOMLEY ACTIVITY CENTRE

MENMARSH ROAD

WORMINGHALL

BUCKINGHAMSHIRE

HP18 9JZ

TEL/FAX: 01844 338380

[enquiries@thomleyhall.org](mailto:enquiries@thomleyhall.org)